



technical data type LPX

Housing : glass reinforced polyester, compression moulded

Diffuser : injected prismatic diffuser available in PC.

Impact strength data of the diffuser :
diffuser in PC : > 6.00 Nm

Reflector : white metal gear tray

Clips : 2-part stainless steel clips

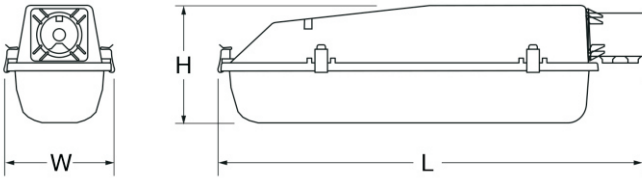
Sealing : poured gasket



Sources :

- Low Pressure Sodium: 26, 36, 55, 66, 90w
- Compact fluorescent: 1/2x36w, 1x40w, 1x55w

Optional : Nema socket for photocell



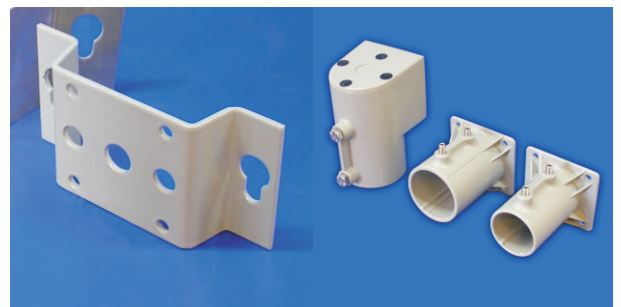
Dimensions (mm)

| Mounting mode | L | W | H |
|---------------|-----|-----|-----|
| Pole top | 775 | 181 | 204 |
| Side entry | 760 | 181 | 204 |
| Wall | 670 | 181 | 204 |
| Corner | 765 | 181 | 204 |



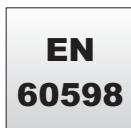
Side-entry
(dia 42 upto 60) mm

Hinged diffuser and
removable geartray



Wall mounting bracket

Pole-top, side entry
bracket



V27.01.2014



technical data type LPX

